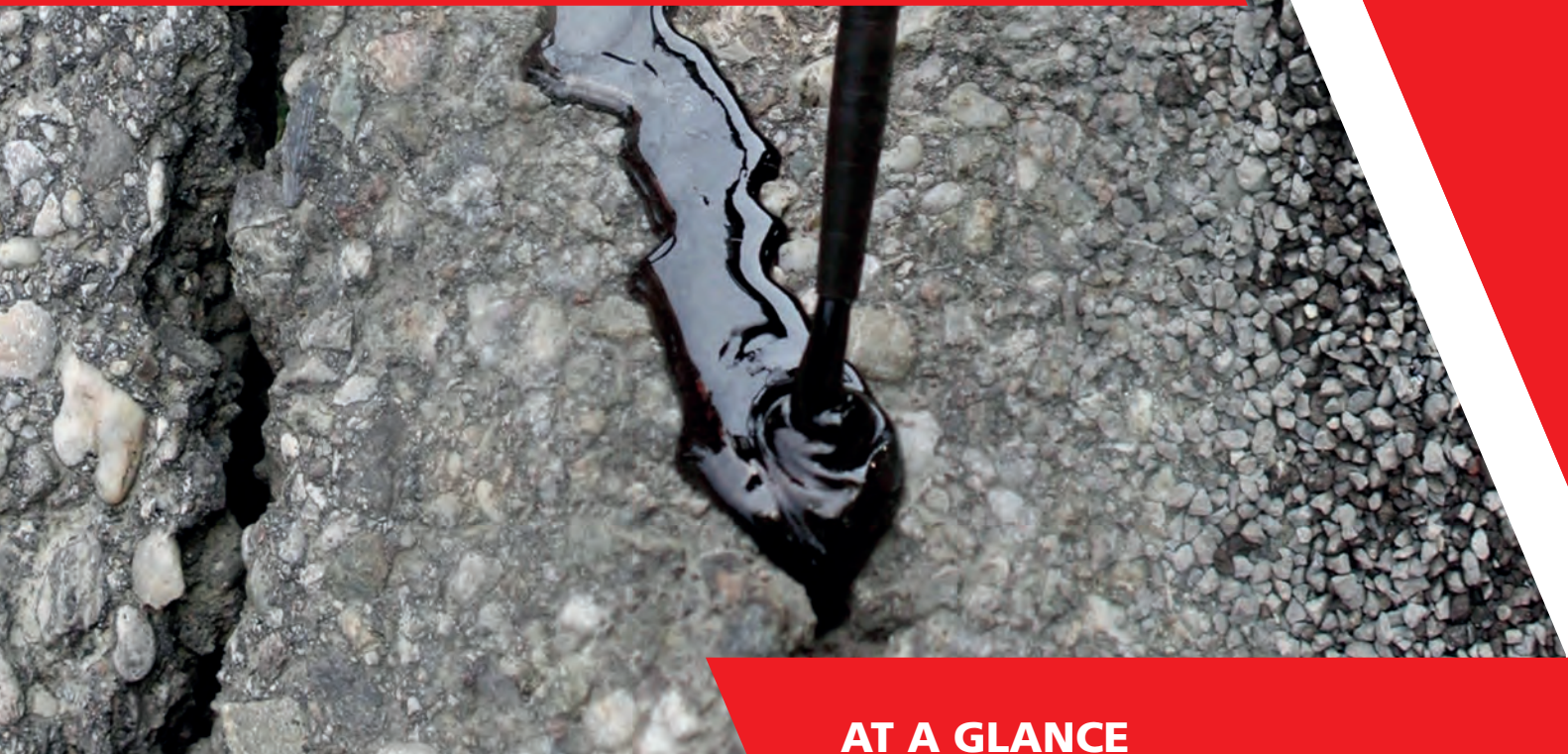


# REFUG® 100 Cartridge



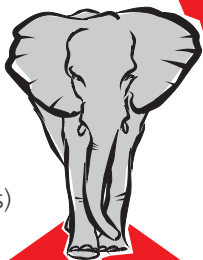
SCAN ME

## JOINT SEALING COMPOUND



### AREAS OF APPLICATION

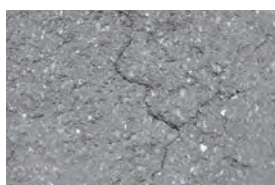
- For grouting joints, cracks and joints on traffic surfaces of all load categories
- Restoring grid cracks
- Restoring longitudinal joints between concrete and asphalt
- Restoring connection joints (e.g. kerbstones, step treads and risers, paving stone and façade joints)
- Connection to building components of any kind (e.g. façades, infiltration ditches, cable loops)
- Filling induction loops



### AT A GLANCE

Cold-processable, elastic joint sealing compound in the cartridge

- ✓ Can be used both internally and externally
- ✓ Reactive-curing
- ✓ Short construction site closure times
- ✓ Can be processed manually



Our product instructions constitute general guidelines, based on average values, and do not apply to applications under special conditions or stresses. Suitability for the intended purpose and local conditions must be verified in advance by the user. The processing instructions on the label must be observed. Approvals from employees are only accepted in the written form. We deliver and are liable exclusively on the basis of our Terms and Conditions of Sale and Delivery. Please refer to our safety data sheets for more information. Errors and omissions excepted. Illustrations and colours are not binding.

# REFUG® 100 Cartridge

## JOINT SEALING COMPOUND

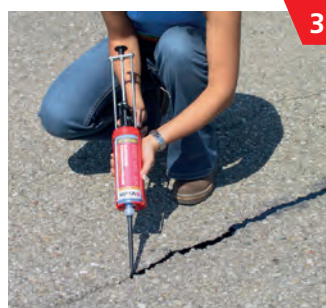
**REFUG®** is a cold-processable, polymer-modified, high-quality sealing compound.



1 Open the cap of the cartridge and screw on the enclosed mixing nozzle\*.



2 Clamp the cartridge into the appropriate dispenser\* for the cartridge size.



3 Quickly fill the contents of the cartridge into the cleaned joint, using up the mixture completely as the curing process starts quickly.



4 The filled joint can be removed using a spatula and sprinkled with chippings or sand.

### PREREQUISITE

The substrate must be free from contamination. The material temperature must be between +15°C and +30°C during processing.

### CONSUMPTION

1 kg REFUG® corresponds to a volume of 1 dm<sup>3</sup>.

### PRODUCT INFORMATION

Product	Packaging	Packing unit – box	Palletising
REFUG® 100 mini	285 g cartridge	12 cartridges inc. 12 mixing nozzles	42 or 84 boxes
REFUG® 100	425 g cartridge	12 cartridges inc. 12 mixing nozzles	30 or 60 boxes
REFUG® 100 maxi	900 g cartridge	5 cartridges inc. 5 mixing nozzles	42 or 84 boxes

\*For sale from VIALIT

**For concrete joints, pre-treatment with REAKTIV PRIMER SPRAY\* is recommended.**

**By choosing a suitable scattering sand, the filled joint can be colour-matched to its surroundings.**

As REFUG® completely fills almost all cavities of a joint, re-pouring may be necessary.



[www.vialit.at](http://www.vialit.at)